

# Cold Shot Chillers

"ECONOMICALLY PRICED DEPENDABILITY"



## TECHNICAL SPECIFICATION

Model: ACWC-720-G-DP<sup>1</sup>-\_\_<sup>2</sup>-\_\_<sup>3</sup>-\_\_<sup>4</sup>

### Description:

Four stage portable air-cooled water chiller system. Dual pump model includes one recirculating pump for the chiller circuit and a second pump dedicated for the process circuit. Process pump indicated on table is typical, with options available for different capacity. System capacity indicated on table is the approximate BTU/hr based on a leaving fluid temperature of 50°F with an ambient air temperature of 95°F.

CAPACITY		720,000 BTU/HR						
±5% AT 50° LCWT / 95°F AMBIENT								
COMPRESSORS / REFRIGERANT		(4 ) ROTARY SCROLLS / PURON R-410A						
CONDENSER FANS / AIRFLOW		4 / 38,800 CFM						
CONDENSER COILS TYPE		MICROCHANNEL HEAT EXCHANGER						
EVAPORATOR TYPE		STAINLESS STEEL / COPPER BRAZED PLATE						
FLUID CONNECTIONS		3" 150# FLANGE (IN/OUT)						
ELECTRICAL:	V - Ø - HZ	COMP RLA / LRA (ea.)		FAN FLA (ea.)	(No*) PUMP FLA		MCA	
- 5	230 - 3 - 60	A1/A2	55.8	340	6.6	(1) 17.5	(2) 17.5	298.6
		B1/B2	55.8	340				
- 6	460 - 3 - 60	A1/A2	26.9	132	3.3	(1) 8.7	(2) 8.7	144.9
		B1/B2	26.9	132				
CHILLER PUMP HP / OUTPUT (1)		7.5 HP / 225 GPM @ 35 PSI						
PROCESS PUMP HP / OUTPUT (2)		7.5 HP / 225 GPM @ 35 PSI						
TANK SIZE / CONSTRUCTION		625 GALLON / HIGH-DENSITY POLYETHYLENE						
DIMENSIONS (APPROX.)		15'7" L x 7'4" W x 6'5" H						
WEIGHT (APPROX.)		2,900 LBS						

Note: All specifications subject to change without notice. Specify voltage and ambient condition upon ordering.

MCA: Minimum circuit amps per UL 1995

### STANDARD FEATURES:

- **Controls:** Electronic temperature controller with scrolling display LED readout.
- **Refrigeration Components:** Scroll compressors, sight glass/moisture indicators, electronic expansion valves, filter driers, pump down valves, fan cycling head pressure controls.
- **Process Fluid Components:** A 40-mesh strainer with blow down valve is standard. Pumps are stainless steel centrifugal. Tanks are insulated with liquid level sight tube and spin on lid. Portable systems may include a bypass flow valve. Flow switch is standard.
- **Safety Controls:** High/low pressure safety, freeze, low water flow, internal overloads, thermal overload circuit breakers and/or safety fuses for compressors, pumps, and fan motors, temperature relief fusible plug on liquid lines of each circuit.
- **Construction:** Galvanized steel frame, powder coated carbon steel cabinet, copper piping.
- **Warranty:** One year parts / five year compressor.

### SUITABLE AMBIENT CONDITIONS/FEATURES:

- **IND:** Indoor use only.
- **40:** Suitable for outdoor use with an ambient of 40°F ambient.
- **0:** Suitable for outdoor use to 0°F ambient. Includes low ambient fan speed controls.
- **M20:** Suitable for outdoor use to -20°F ambient. Includes with low ambient fan speed controls.

<sup>1</sup> Flow Design ( \_=Portable, ST=Stationary, RF=Reverse Flow, EXCH=Extra Heat Exchanger, DP=Dual Pump, DR=Dual Return)

<sup>2</sup> Leaving Fluid Temperature ( \_=Standard, LT=Low Temperature-specify lowest temperature in °F)

<sup>3</sup> Ambient Temperature Conditions (see above)

<sup>4</sup> Electrical Power Code (see above)

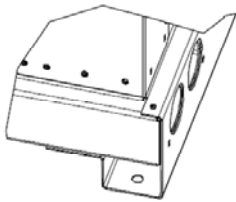
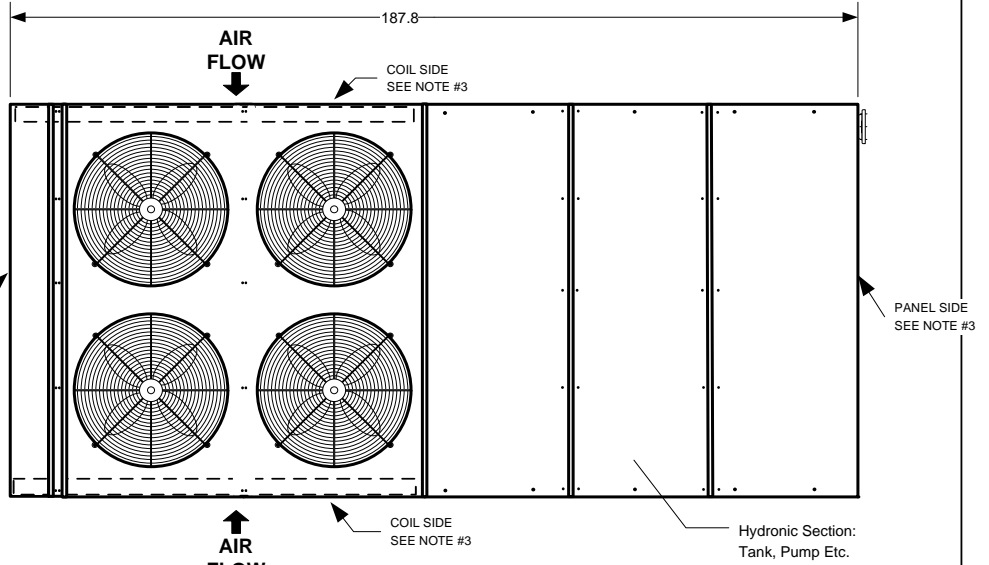
Marrone & Co., Inc.

2730 Maximilian Drive, Houston, Texas 77032 • Phone (800) 473-9178, (281) 227-8400

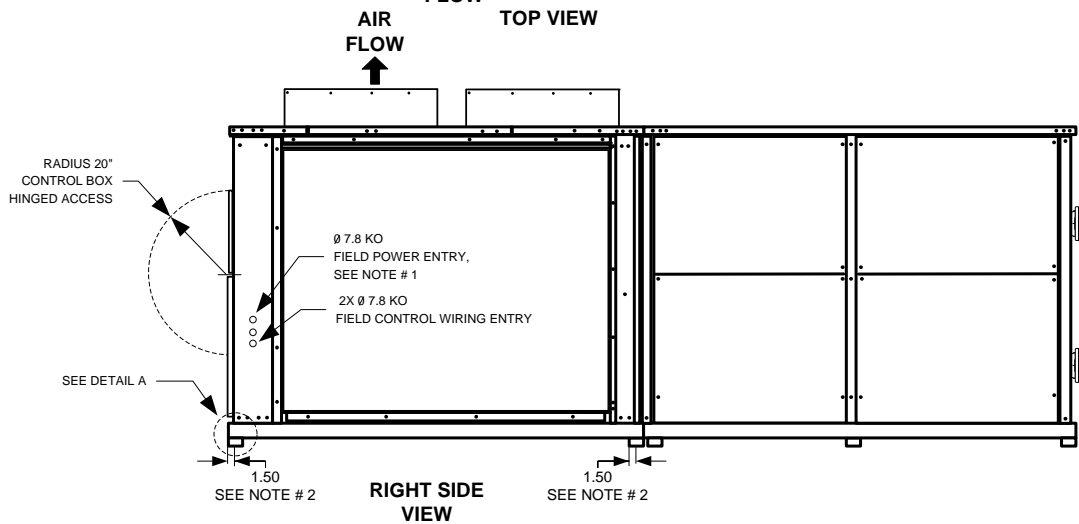
Fax (800) 473- 9175, (281) 227-8404 • www.waterchillers.com

**GENERAL NOTES**

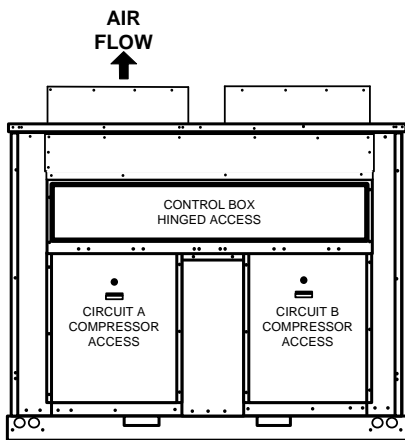
1. 7/8 PILOT HOLE PROVIDED FOR LOCATING FIELD POWER WIRING. ACTUAL HOLE REQUIRED DEPENDS ON FIELD WIRE SIZING.
2. 7/16 HOLE USED FOR MOUNTING UNIT.
3. UNIT MUST HAVE CLEARANCES AS FOLLOWS:  
TOP - DO NOT RESTRICT.  
COIL END - 42" FROM SOLID SURFACE.  
PANEL SIDE - 48" PER NEC.
4. UNIT CAN BE HANDLED USING THE FORK TRUCK LIFT POCKETS.
5. FLOW SWITCH IS (OPTIONAL) DEPENDING ON SYSTEM DESIGN.
6. TYPICAL TANK INCLUDES A LEVEL SIGHT TUBE, SPIN ON LID, DRAIN PORT.
7. DO NOT CAP OR OTHERWISE OBSTRUCT THE LIQUID LINE TEMPERATURE RELIEF.



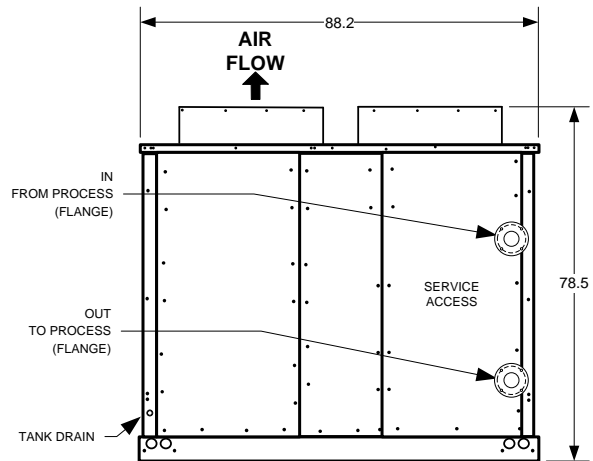
DETAIL A



RIGHT SIDE VIEW



FRONT VIEW



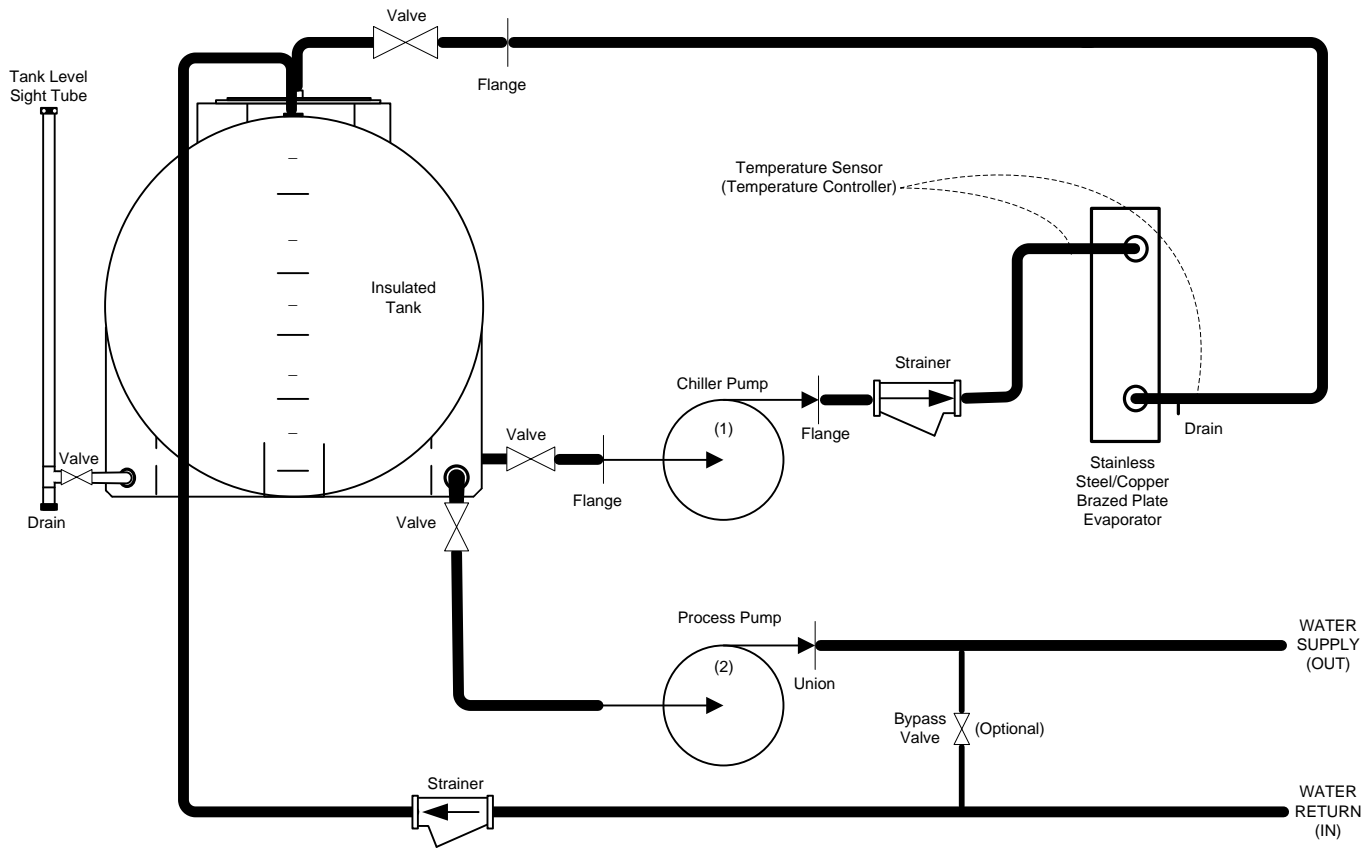
REAR VIEW

SEE NOTE #3 FOR SERVICE CLEARANCE

SEE NOTE #3 FOR SERVICE CLEARANCE

**COLD SHOT CHILLERS**

DRAWN		ENGINEERING	SIZE	A	DIMENSION NOTES	DWG NO		REV
ISSUED		5/19/2017	SCALE	N.T.S.	Dimensions are in inches unless otherwise specified.	INSTALLATION DRAWING ACWC-720- (Typical - Front-Rear-Top-Side)		1
				SCALE	N.T.S.	DWG-INST_-720-G---(0517) .vsd	SHEET	1



NOTES

- Design and specifications subject to change without notice.
- Layout is not for engineering purposes.
- Flow Switch typical on 50 through 100 ton units.

<b>COLD SHOT CHILLERS</b>	
DRAWN	ENGINEERING
ISSUED	11/30/2016

SIZE	SCOPE
A	Flow Diagram_G-DP
SCALE	NA

DWG NO	REV
<b>CHILL WATER CIRCUIT – TYPICAL</b> <b>Large Chiller G-DP “Portable with Flow Switch”</b>	1
DWG-CHW_G_G-DP (1116).vsd	SHEET 1